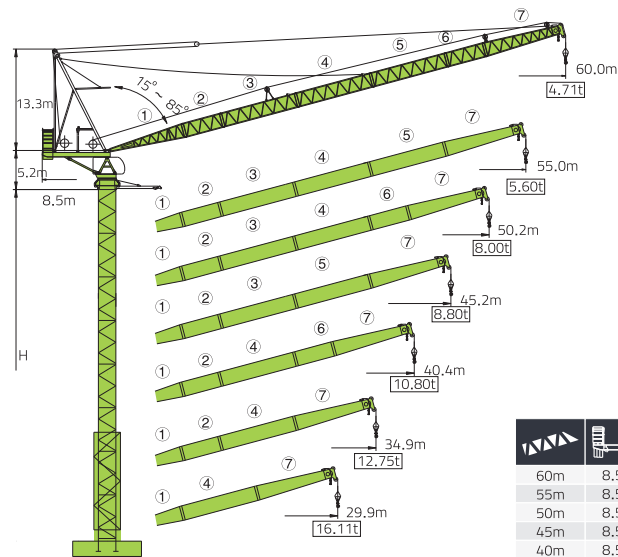


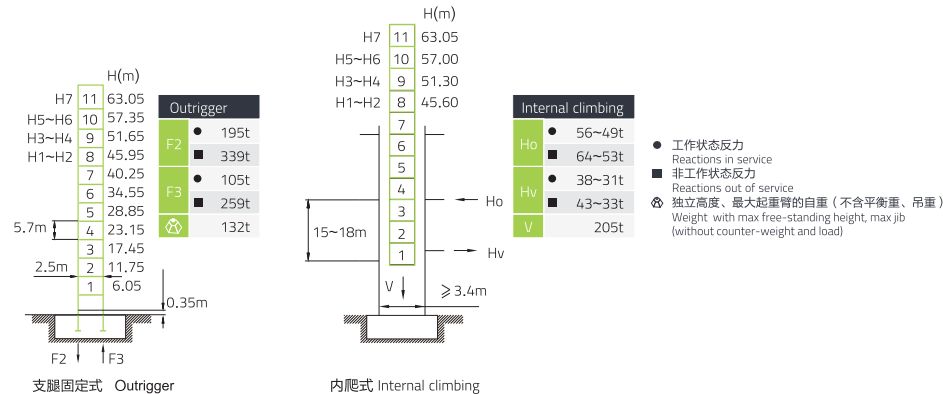
# L400-25



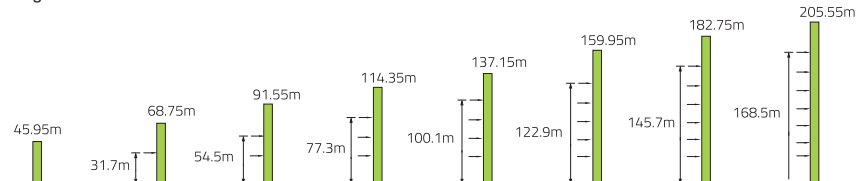
			H	(kg)	PHZ 10000A	PHZ 10000	PHZ 6000	PHZ 3000	PHZ 2000
60m	8.5m	H1	37000	1	1	2	1	1	
55m	8.5m	H2	37000	1	1	2	1	1	
50m	8.5m	H3	37000	1	1	2	1	1	
45m	8.5m	H4	31000	1	1	1	1	1	
40m	8.5m	H5	29000	1	1	1	1	0	
35m	8.5m	H6	26000	1	1	1	0	0	
30m	8.5m	H7	26000	1	1	1	0	0	

Final product specification shall be in accordance with purchase order or sales contract only

## 塔身 Masts / 反力 Reactions

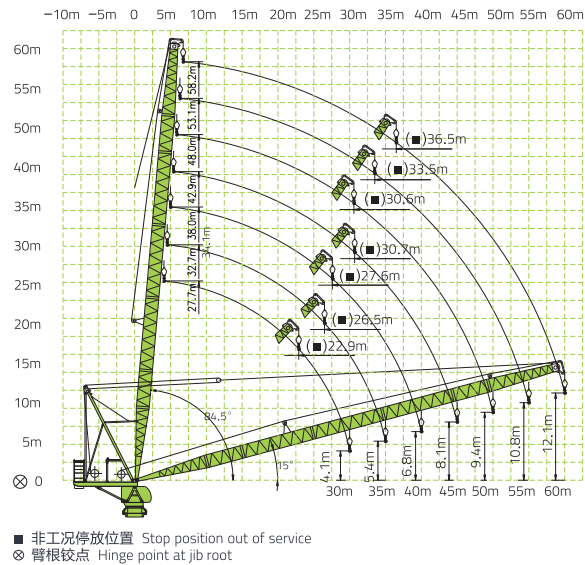


## 附着 Anchorages




# L400-25

起重臂 Luffing Jib








起重特性 Load Diagram

		Max Capacity m/t	20.0	25.0	30.0	35.0	40.0	45.0	50.0	55.0	60.0
60	⊕	6.8~24.3/12.50	12.50	12.41	10.45	8.87	7.62	6.59	5.87	5.30	4.71
	⊖	6.5~21.0/14.00	14.00	12.30	10.23	8.65	7.40	6.38	5.68	5.14	4.60 (59.6m)
55	⊕	6.3~27.7/12.50	10.80		11.48	9.48	8.10	7.03	6.21	5.60	
	⊖	6.1~21.2/16.00	16.00	13.81	11.24	9.26	7.84	6.85	6.05	5.51 (54.5m)	
50	⊕	5.9~31.4/12.50	12.50			11.10	9.61	8.50	8.00 (50.2m)		
	⊖	5.6~14.3/25.00	19.22	15.48	12.88	10.89	9.44	8.35	7.94 (49.7m)		
45	⊕	5.4~32.6/12.50	12.50			11.67	10.00	8.80 (45.2m)			
	⊖	5.2~16.1/25.00	20.74	16.70	13.67	11.48	9.84	8.76 (44.7m)			
40	⊕	5.0~35.1/12.50	12.50			12.50 (40.4m)					
	⊖	4.7~20.2/25.00	25.00	19.41	15.31	12.42 (39.9m)					
35	⊕	4.5~35.4/12.50	12.50			12.50 (35.4m)					
	⊖	4.3~20.4/25.00	25.00	19.48	15.47	12.75 (34.9m)					
30	⊕	4.1~30.4/12.50	12.50		12.50 (30.4m)						
	⊖	3.8~20.5/25.00	25.00	19.76	16.11 (29.9m)						

# L400-25

■ 传动机构 Mechanisms

配置 configuration		♁			♂			KW	
		III	IV	V	III	IV	V		
 起升 Hoisting	QPL2590	m/min	0~37.7	0~75	0~94	0~18.8	0~37.7	0~47	90m Ⓞ (6 layers)
		t	12.5	6.25	3	25	12.5	6	
	QPL25130	m/min	0~53	0~106	0~132	0~26.5	0~53	0~66	
		t	12.5	6.25	3	25	12.5	6	
 回转 Slewing	HPV145B1.130B HPV145B2.130B	r/min	0~0.72					3×145 N.m	Ⓞ 超出咨 询我们 Consult us if overtop
	HPW75F1.130A HPW75F2.130A	r/min	0~0.72					3×145 N.m	
 变幅 Luffing	BPL600	min	3(15 °~ 85 °)					60	
	BPL750B	min	2.65(15 °~ 85 °)					75	
	380V(±10%)50Hz	172.5 /229.5 kW							