

## Backhoes

### Backhoe Model : KB2385

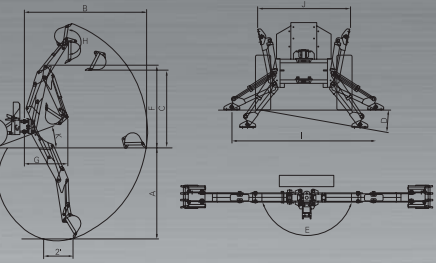
A. Digging Depth (1 no foot flat bottom)	2400mm	94.5'
B. Reach from Center Line of Swing Pivot	3265mm	128.5'
C. Loading Height (Bucket at 60°)	2010mm	79.1'
D. Maximum Leveling Angle	11°	
E. Maximum Swing Arc Angle	180°	
F. Transport Height (Maximum)	2210mm	87'
G. Transport Overhang in Carry Position	1150mm	45.3'
H. Bucket Rotation	180°	
I. Stabilizer Spread Down Width	1950mm	76.8'
J. Stabilizer Spread In Carry Position	2250mm	49.2'
K. Angle of Descent	21°	
L. Shipping Weight (Less Bucket)	445kg	980lbs
M. Bucket Digging Force	1800kg	3550lbs
N. Opposite Digging Force	1000kg	2225lbs
O. Operating Pressure	18bar	2.59psi

### Cylinders

Cylinder	Piston DIA	Rod DIA	Stroke
Bump	75	1.5	18.54
Bucket	225	1.35	13.25
Diagnostick	225	1.4	20.37
Swing	225	1.35	22
Stabilizer	225	1.35	10.37

### Buckets

Bucket	Teeth Qty	Struck Capacity	Heaped Capacity	Shipping Weight
17' Bucket	3	1.01 cu. ft.	1.24 cu. ft.	82 lbs
18' Bucket	3	1.35 cu. ft.	1.76 cu. ft.	94 lbs
19' Bucket	4	1.69 cu. ft.	2.02 cu. ft.	100 lbs
24' Bucket	5	2.11 cu. ft.	2.82 cu. ft.	120 lbs



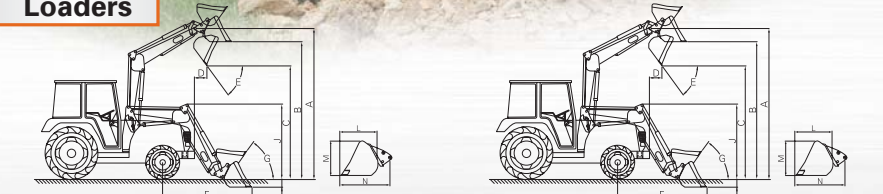
## Loaders

### Loader Model:KL1590 Tractor Model:DK451C

A. Maximum Lift Height	2947mm	116.0'
B. Clearance with Attachment Level	2680mm	104.7'
C. Clearance with Attachment Dumped	2104mm	82.5'
D. Reach at Maximum Height	200mm	10.2'
E. Maximum Dump Angle	75°	
F. Reach with Attachment on Ground	1980mm	77.9'
G. Attachment Rollback Angle	47°	
H. Digging Depth Below Grade	125mm	4.9'
I. Overall Height in Carry Position	1555mm	61.2'
J. Depth of Attachment (to back of inner shell)	600mm	23.6'
K. Height of Attachment	560mm	22.0'
L. Depth of Attachment (to pivot pin)	75mm	3.1'
M. Lift Capacity to Full Height @ Pivot Pins	450~600kg	992~1323lb
N. Breakout Force @ Ground Level, pivot pin	500~600kg	1212~1323lb
O. Relief Valve Setting (Loader Control Valve)	(2400psi)	
P. Relief Valve Setting (Tractor System)	(2400psi)	
Q. Lift Cylinders	350mmx445mm	11.97"x17.5"
R. Bucket Cylinder	350mmx378mm	11.97"x14.9"
S. Attachment used for specification	1830mm	72"
T. Hydraulic System	Tractor pump w/bader control valve	
U. Standard Bucket Level Indicator		

### Loader Model:KL1595 Tractor Model:DK501/DK551(C)

A. Maximum Lift Height	2922mm	110.8'
B. Clearance with Attachment Level	2635mm	99.6'
C. Clearance with Attachment Dumped	2073mm	78.0'
D. Reach at Maximum Height	200mm	9.5'
E. Maximum Dump Angle	75°	
F. Reach with Attachment on Ground	2030mm	82.7'
G. Attachment Rollback Angle	47°	
H. Digging Depth Below Grade	120mm	4.6'
I. Overall Height in Carry Position	1530mm	60.3'
J. Depth of Attachment (to back of inner shell)	600mm	23.6'
K. Height of Attachment	560mm	22.0'
L. Depth of Attachment (to pivot pin)	75mm	3.1'
M. Lift Capacity to Full Height @ Pivot Pins	500~600kg	1212~1323lb
N. Breakout Force @ Ground Level, pivot pin	500~600kg	1212~1323lb
O. Relief Valve Setting (Loader Control Valve)	(2500psi)	
P. Relief Valve Setting (Tractor System)	(2500psi)	
Q. Lift Cylinders	350mmx445mm	11.97"x17.5"
R. Bucket Cylinder	350mmx378mm	11.97"x14.9"
S. Attachment used for specification	1830mm	72"
T. Hydraulic System	Tractor pump w/bader control valve	
U. Standard Bucket Level Indicator		



## SPECIFICATIONS

Model	DK451C	DK501	DK551(C)	
<b>Engine</b>	4A220B-1	4A200T	4A220T	
Type	Indirect injection, vertical, water cooled 4-cycle diesel engine	Indirect injection, vertical, water cooled 4-cycle diesel turbo engine	Indirect injection, vertical, water cooled 4-cycle diesel turbo engine	
Engine Horsepower	rpm 45 Gross @ 2600	49 Gross @ 2600	54 Gross @ 2600	
Displacement	cc 2197	1999	2197	
Fuel tank	l 58	68	68	
Engine crankcase(included Filter)	l 8.0	8.3	9.7	
Engine coolant	l 8.6	9.0	8.6	
Transmission case	l 38	38	38	
Support of front axle	l 8.2	8.2	8.2	
Front axle case(LH,RH)	0	0	0	
<b>Clutch</b>	Dry single plate - single stage Type			
Clutch size	mm 260	275	275	
Type	Synchronized shuttle and transmission			
Travel Speeds	12 Forward, 12 Reverse			
<b>Transmission</b>	Forward km/h	1st - 0.40	1st - 0.40	1st - 0.42
	12th - 26.62	12th - 26.62	12th - 27.90	
Reverse km/h	1st - 0.33	1st - 0.33	1st - 0.35	
	12th - 22.03	12th - 22.03	12th - 23.09	
Diff. Lock	Rear (standard)			
<b>Brakes</b>	Wet Disc			
Type	Independent			
<b>Power Take-off</b>	PTO revolution rpm	540,750,1000	540 / 1000	540 / 1000
PTO shaft	SAE 1-3/8, 6 splines			
<b>3-Point Hitch</b>	Type	Category I		
Lift Capacity at lift point	kgf	1204 (max)		
Drawbar type	DRAWBAR			
Pump Capacity l/min	1st : 37.4	1st : 37.4	1st : 37.4	
	2nd : 16.4	2nd : 16.4	2nd : 16.4	
<b>Hydraulics</b>	3-pt. Hitch control Position, Draft and mixed Control			
No. of standard remote valves	2EA (D/T double, double)	2EA (D/T, D/T+F type)	2EA (D/T, D/T+F type)	
Joy stick valve	alv (4port)			
Steering	Hydraulic			
Hydraulic 4WD	Standard			
<b>Standard Tires</b>	Front	9.5-18	9.5-18	9.5-20
	Rear	13.6-28	13.6-28	14.9-28
Length (with 3 point)	mm 3395	3621	3621	
Width	mm 1564	1740	1740	
Height (Cabin, ROPS)	mm 2450, 2606	2470, 2685	2474, 2717	
Wheelbase	mm 1880	1920	1920	
Ground Clearance	mm 370	390	443	
Front Tread-Std. Tires	mm 1260	1332	1440	
Rear Tread-std. Tires	mm 1208	1292	1370	

\*NOTE : The specifications are subject to change for the purpose of improvement without any notice.



Daedong Industrial Co., Ltd.

1422-5, Seocho-Dong, Seocho-Ku, Seoul, Korea  
Tel. 82-2-3470-7445 Fax. 82-2-3470-7485  
www.daedong.co.kr



ISO 9001 NO.954598  
ISO 14001 NO.771475  
OHSAS 18001 NO.K000008

### STANDARD EQUIPMENTS

- Foldable ROPS with Seat Belt
- Hydraulic Power Steering
- Differential Lock
- Wet Disc Brakes
- Hand & Foot Throttles
- Swing Drawbar
- Adjustable Seat
- Headlights
- Safety Lights
- Safety Start Switch
- Creep Speed Gear
- Rear Working Light
- Full Open Hood
- Flip up PTO Guard
- Hyd. Pump
- Dual Remote Hyd. Valve
- Joystick Valve(4ports) for Loader
- 4 Wheel Drive
- Front Suit Case Weights

### OPTIONAL EQUIPMENTS

- Front PTO
- Sun Shade
- Rear Wheel Weights



## Daedong Tractors DK451C / DK501 / DK551(C)





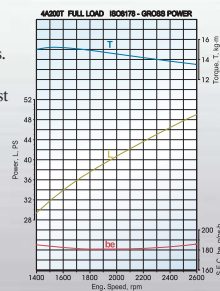
# DK451C / DK501 / DK551(C)

Four Wheel Drive Tractor



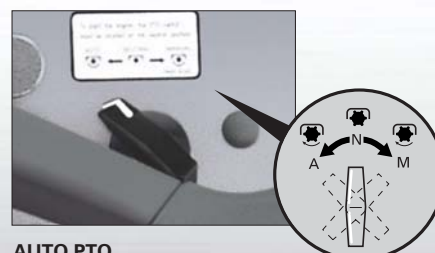
### Environmentally Friendly Engine

Daedong offers a quieter, smoother running diesel engine that meets or exceeds EPA and CARB regulations. Daedong engines have passed a stringent 2000 hour durability test equivalent to 5,000 hours of normal operation.



### PTO Performance

Safe and easy operation of the live independent rear PTO is made possible with a hydraulic clutch. Three selectable PTO speeds (540/750/1000 RPM) power a wide range of implements. The engine crankshaft has a spline that will accept an optional front PTO.



### AUTO PTO

For added safety, the AUTO PTO function can be selected to automatically stop the PTO when the implement is raised by the control lever; eliminating exposure to the moving parts. A safety interlock prevents engine start when the PTO switch is left on.

### Auxiliary Lift Control

The 3-point hitch can also be controlled from the ground at the rear of the tractor. Attaching implements is easier and safer with this control within easy reach.



### Telescopic CAT I & II Hitch

Implements are easily attached with crank type adjustable lift rod, telescopic lower link ends and telescopic stabilizers. Interchangeable CAT I and CAT II ends permit a wider variety of implements to be used. (CAT II - Standard, CAT I - Option)



### Streamlined Hood Design

Dynamic & modern design and simple body line improves visibility and allows convenient service access. A simple release lever opens the hood and side panels can be easily removed without tools.

### Deluxe Operator Station

The full-featured instrument panel, adjustable seat, tilt wheel, power steering, grab handles, wide step-through deck, and convenient controls are designed for operator comfort and user-friendly operation.



### 12 x 12 Synchronized Transmission

The fully synchronized shuttle and synchronized transmission provide smooth and easy shifting on the move. The transmission features 12 forward and 12 reverse gears to handle all kinds of jobs.



### Full-featured Cab

The Deluxe Cabin features air conditioning, heating, windshield wiper/washer, roof vent, door props for ventilation, AM/FM cassette radio and many other convenient features.

