

# 25/30/35BH-9

Electric Counterbalance Trucks

MOVING YOU FURTHER

HYUNDAI MATERIAL HANDLING



 **HYUNDAI**  
**MATERIAL HANDLING**

Head Office (Sales office)

First tower, 55, Bundang-ro, Bundang-gu, Seongnam-si, Gyeonggi-do, Korea

PLEASE CONTACT

[www.hyundai-ce.com](http://www.hyundai-ce.com)

2019. 01 Rev. 8

\*Photo may include optional equipment.

 **HYUNDAI**  
**MATERIAL HANDLING**

# Your satisfaction is our priority!

Hyundai introduces a new line of **9-series** battery forklift trucks. The newly designed 4 wheel counterbalance trucks provide every operator comfortable driving, increased productivity and easy maintenance.

## Compact forklift with proven AC technology

- Maximum performance
- Comfortable operating room
- Battery side loading system
- Curve control system
- Fingertip controlled mini levers available (optional)
- Weight Indicator(optional)



■ Some of the photos may include optional equipment.



# High Efficiency & Optimal Performance



Efficient, smooth running and powerful performance make your work more productive.

**25/30/35BH-9**



### More efficient operating control levers (Optional)

Electronic directional control and secondary horn are mounted to the hydraulic lift lever for quick and precise maneuvering.



### Finger tip control levers (Optional)

The finger tip control lever allows more precise control and fatigue-free working. The ergonomically designed armrest can be adjusted up, down, forward and backward for various operator's body type.

■ Some of the photos may include optional equipment.



### Advanced drive and lift performance with proven durability and low maintenance

The enclosed drive and pump motor with AC technology combine power, high maintenance intervals and excellent durability. The brushless AC motors offer improved efficiency and reduction maintenance cost.



■ Some of the photos may include optional equipment.

### Curve control

Curve Control limits travel speed based on turning radius, reducing speed for a smooth, precise turning operation for the driver.



Limit the speed



### Dual drive system

Using a dual drive system will minimise aisle width and energy consumption. Plus, the drive units and AC motors integrated in the front axle provide the operator with extremely improved gradient capacity.



### Auto fork leveling system (Optional)

In order to improve productivity the auto fork leveling system will automatically stop the tilt movement when the mast is in a straight position.

Max.Gradeability (loaded)		Max.Travel Speed (Unloaded)	
Model	%	Model	Km / h
25BH-9	26	25BH-9	19
30BH-9	22	30BH-9	19
35BH-9	19	35BH-9	19

### Anti roll back system, travel speed and gradeability

Anti Roll-back system offers protection against the machine rolling back on a ramp in combination with exceptional ramp start capabilities.



# Advanced Safety



The safely designed driver's space makes your operating more comfortable.

**25/30/35BH-9**



■ Some of the photos may include optional equipment.

## Excellent visibility for safe operation

Optimized lift cylinder arrangement provides operator with wider visibility.

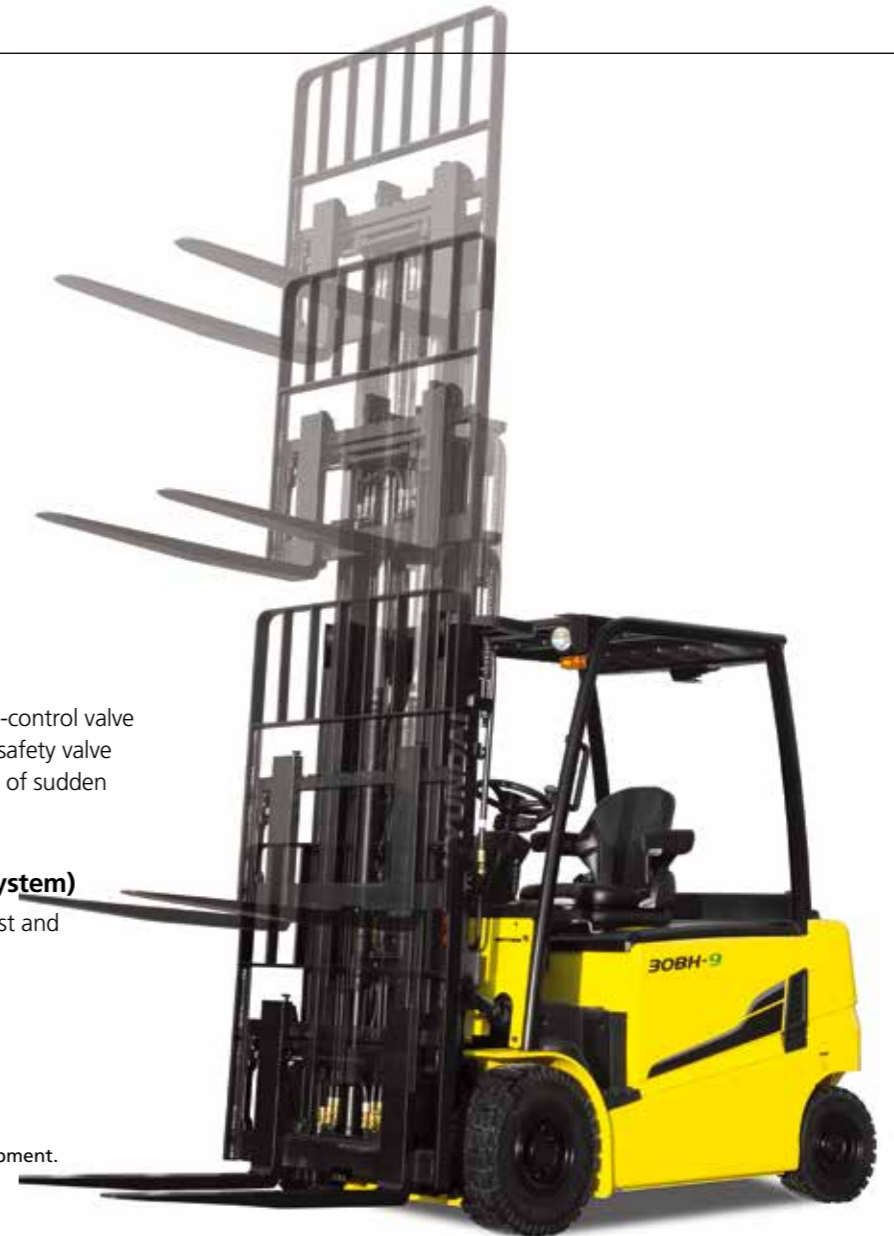


## Panoramic mirror

The panoramic mirror expands the driver's view when backing up.

## Strong overhead guard

Exceeding ISO 6055 and ANSI regulations, the overhead guard offers great protection combined with excellent all around visibility.



## Fork safety features

When the forks are being lowered, a down-control valve maintains the controlled speed. The down-safety valve prevents forks from dropping down in case of sudden damage of hydraulic line.

## OPSS(Operator Presence Sensing System)

When the operator is not in the seat all mast and drive movements are impossible.

Lift Lock   Tilt Lock   Drive Lock

■ Some of the photos may include optional equipment.



## Safety lamps & rear reflectors

LED combination lights and halogen headlights offer the driver visibility in all circumstances. Rear reflectors mounted on the counterweight enhance safety for the driver and the application.



# Optimised Ergonomics & Fast and Easy Maintenance



An ideal arrangement of components ensures easy access and convenience for maintenance.

**25/30/35BH-9**



## Spacious operator cabin

The newly designed cabin was conceived for more space, a wider field of view and operator comfort.

■ Some of the photos may include optional equipment.



## Optimized pedal position and floor mat

The position of accelerator and throttle have been optimized through human engineering.



## Large entrance step

Wide and non-slip step offers convenience and safety when entering and exiting truck.



## Adjustable steering wheel

To achieve a comfortable drive position, the angle of the steering column can easily be adjusted through a lever on the right-hand side of the steering column.



## Grammer seat

An easily adjustable suspension seat, based on a human engineering design, provides greater comfort reducing operator fatigue.



## Advanced LCD Monitor

The LCD color monitor with 3.5 inch graphic smart display allows the operator to easily and efficiently control the machine. The monitor provides information about speed level, steer angle & travel direction, battery discharge indicator, hour meter & working mode. The optional load indicator displays the load weight in the monitor. The operator can select various performance modes to meet all working conditions. It is available multi-languages (maximum 11) for operator.

**H** (High) mode **N** (Normal) mode **E** (Economic) mode **Turtle mode**

■ Some of the photos may include optional equipment.



## Easy battery replacement

The battery compartment is equipped with a side battery removal assembly for easy removal and replacement.



## Brake oil reservoir with level sensor

The enhanced brake oil reservoir, located in the upper left dash, is equipped with an electronic level sensor and easily visible through the monitor.

# New 9 Series

**25/30/35BH-9**

## Mast Specification (25BH-9)

Mast Type	Maximum Fork Height		Overall Height (Lowered)		Free Lift Height						Tilt Angle		Load capacity w/o side shift		Load capacity w/side shift		Truck Weight (Unloaded)		
					With Load Backrest		Without Load Backrest		Without Load Backrest (3/4-SPOOL)		Fwd	Bwd	24 in LC	500mm LC	24 in LC	500mm LC			
	in	mm	in	mm	in	mm	in	mm	in	mm	deg	deg	lb	kg	lb	kg	lb	kg	
2-Stage Limited free lift	V300	118.3	3,005	79.2	2,012	4.5	115	4.5	115	4.5	115	6	10	5,000	2,500	5,000	2,500	10,341	4,691
	*V330	130.1	3,305	85.1	2,162							6	10	5,000	2,500	5,000	2,500	10,384	4,710
	V350	138.0	3,505	89.1	2,262							6	10	5,000	2,500	5,000	2,500	10,421	4,727
	V370	145.9	3,705	95.0	2,412							6	10	5,000	2,500	5,000	2,475	10,470	4,749
	V400	157.7	4,005	100.9	2,562							6	10	5,000	2,500	5,000	2,425	10,518	4,771
	V450	177.4	4,505	112.7	2,862							6	6	4,960	2,400	4,740	2,325	10,691	4,849
2-Stage full free lift	VF295	117.2	2,976	79.2	2,012	32.8	832	54.3	1,379	54.3	1,379	6	6	5,000	2,500	5,000	2,500	10,474	4,751
	VF325	129.0	3,276	85.1	2,162	38.7	982	60.2	1,529	60.2	1,529	6	6	5,000	2,500	5,000	2,500	10,547	4,784
3-Stage full free lift	TF430	169.5	4,305	79.2	2,012	32.8	832	52.0	1,322	50.4	1,281	6	6	4,960	2,450	4,740	2,375	10,753	4,878
	TF450	177.4	4,505	83.1	2,112	36.7	932	56.0	1,422	56.0	1,422	6	6	4,890	2,400	4,670	2,325	10,800	4,899
	TF470	185.2	4,705	85.1	2,162	38.7	982	58.0	1,472	56.3	1,431	6	6	4,830	2,350	4,610	2,275	10,825	4,910
	TF500	197.0	5,005	89.1	2,262	42.6	1,082	61.9	1,572	60.3	1,531	6	6	4,740	2,300	4,520	2,225	10,879	4,935
	TF550	216.7	5,505	96.9	2,462	50.5	1,282	69.8	1,772	69.8	1,772	6	6	4,560	2,200	4,340	2,125	10,965	4,974
	TF600	236.4	6,005	104.8	2,662	58.3	1,482	77.6	1,972	77.6	1,972	3	3	4,430	2,150	4,210	2,075	11,046	5,011
	TS430	169.5	4,305	79.2	2,012	32.8	832	52.0	1,322	50.2	1,274	6	6	4,960	2,450	4,740	2,375	10,753	4,878
	TS470	185.2	4,705	85.1	2,162	38.7	982	58.0	1,472	56.1	1,424	6	6	4,830	2,350	4,610	2,275	10,825	4,910
	TS500	197.0	5,005	89.1	2,262	42.6	1,082	61.9	1,572	60.0	1,524	6	6	4,740	2,300	4,520	2,225	10,879	4,935
	TS550	216.7	5,505	96.9	2,462	50.5	1,282	69.8	1,772	69.8	1,772	6	6	4,560	2,200	4,340	2,125	10,965	4,974
4-Stage full free lift	QF700	276.2	7,015	96.3	2,447	49.9	1,267	71.4	1,814	69.4	1,762	3	3	2,690	1,300	2,470	1,225	11,831	5,366
	QF790	311.6	7,915	108.1	2,747	61.7	1,567	75.4	1,915	61.5	1,563	3	3	1,570	750	1,350	675	12,154	5,513

※ TS-Mast : Wide Visible 3-Stage Full Free Lift Mast with 2 Free Lift Cylinders.

\* Standard

## Mast Specification (30BH-9)

Mast Type	Maximum Fork Height		Overall Height (Lowered)		Free Lift Height						Tilt Angle		Load capacity w/o side shift		Load capacity w/side shift		Truck Weight (Unloaded)		
					With Load Backrest		Without Load Backrest		Without Load Backrest (3/4-SPOOL)		Fwd	Bwd	24 in LC	500mm LC	24 in LC	500mm LC			
	in	mm	in	mm	in	mm	in	mm	in	mm	deg	deg	lb	kg	lb	kg	lb	kg	
2-Stage Limited free lift	V300	118.3	3,005	79.2	2,012	4.5	115	4.5	115	4.5	115	6	10	6,000	3,000	6,000	3,000	11,263	5,109
	*V330	130.1	3,305	85.1	2,162							6	10	6,000	3,000	6,000	3,000	11,310	5,130
	V350	138.0	3,505	89.1	2,262							6	10	6,000	3,000	6,000	3,000	11,350	5,148
	V400	157.7	4,005	100.9	2,562							6	10	6,000	3,000	6,000	3,000	11,454	5,196
	V450	177.4	4,505	112.7	2,862							6	6	6,000	3,000	6,000	2,950	11,635	5,277
	V500	197.0	5,005	122.5	3,112							6	6	6,000	2,900	6,000	2,775	11,721	5,317
2-Stage full free lift	VF295	117.2	2,976	79.2	2,012	32.8	832	51.9	1,317	51.9	1,317	6	6	6,000	3,000	6,000	3,000	11,340	5,144
	VF325	129.0	3,276	85.1	2,162	38.7	982	60.2	1,467	57.8	1,467	6	6	6,000	3,000	6,000	2,950	11,411	5,176
	VF345	136.9	3,476	89.1	2,262	42.6	1,082	61.7	1,567	61.7	1,567	6	6	6,000	3,000	6,000	2,875	11,484	5,209
3-Stage full free lift	TF400	157.7	4,005	75.3	1,912	28.8	732	47.9	1,217	46.5	1,181	6	6	6,000	3,000	6,000	3,000	11,670	5,294
	TF430	169.5	4,305	79.2	2,012	32.8	832	51.9	1,317	50.4	1,281	6	6	6,000	3,000	6,000	2,950	11,768	5,338
	TF450	177.4	4,505	83.1	2,112	36.7	932	55.8	1,417	55.8	1,417	6	6	6,000	3,000	6,000	2,875	11,778	5,343
	TF470	185.2	4,705	85.1	2,162	38.7	982	57.8	1,467	56.3	1,431	6	6	6,000	2,950	6,000	2,825	11,805	5,355
	TF500	197.0	5,005	89.1	2,262	42.6	1,082	61.7	1,567	60.3	1,531	6	6	6,000	2,900	5,790	2,775	11,860	5,380
	TF550	216.7	5,505	96.9	2,462	50.5	1,282	69.6	1,767	69.6	1,767	6	6	5,860	2,800	5,560	2,675	11,956	5,423
	TF600	236.4	6,005	104.8	2,662	58.3	1,482	77.4	1,967	77.4	1,967	3	3	5,690	2,700	5,390	2,575	12,049	5,465
	TS430	169.5	4,305	79.2	2,012	32.8	832	51.9	1,317	49.3	1,253	6	6	6,000	3,000	6,000	2,950	11,768	5,338
	TS450	177.4	4,505	83.1	2,112	36.7	932	55.8	1,417	55.2	1,403	6	6	6,000	3,000	6,000	2,875	11,778	5,343
	TS470	185.2	4,705	85.1	2,162	38.7	982	57.8	1,467	55.2	1,403	6	6	6,000	2,950	6,000	2,825	11,805	5,355
4-Stage full free lift	QF790	311.6	7,915	108.1	2,747	61.7	1,567	75.8	1,925	64.8	1,645	3	3	1,590	750	1,290	625	13,006	5,900

※ TS-Mast : Wide Visible 3-Stage Full Free Lift Mast with 2 Free Lift Cylinders.

\* Standard

# New 9 Series

25/30/35BH-9

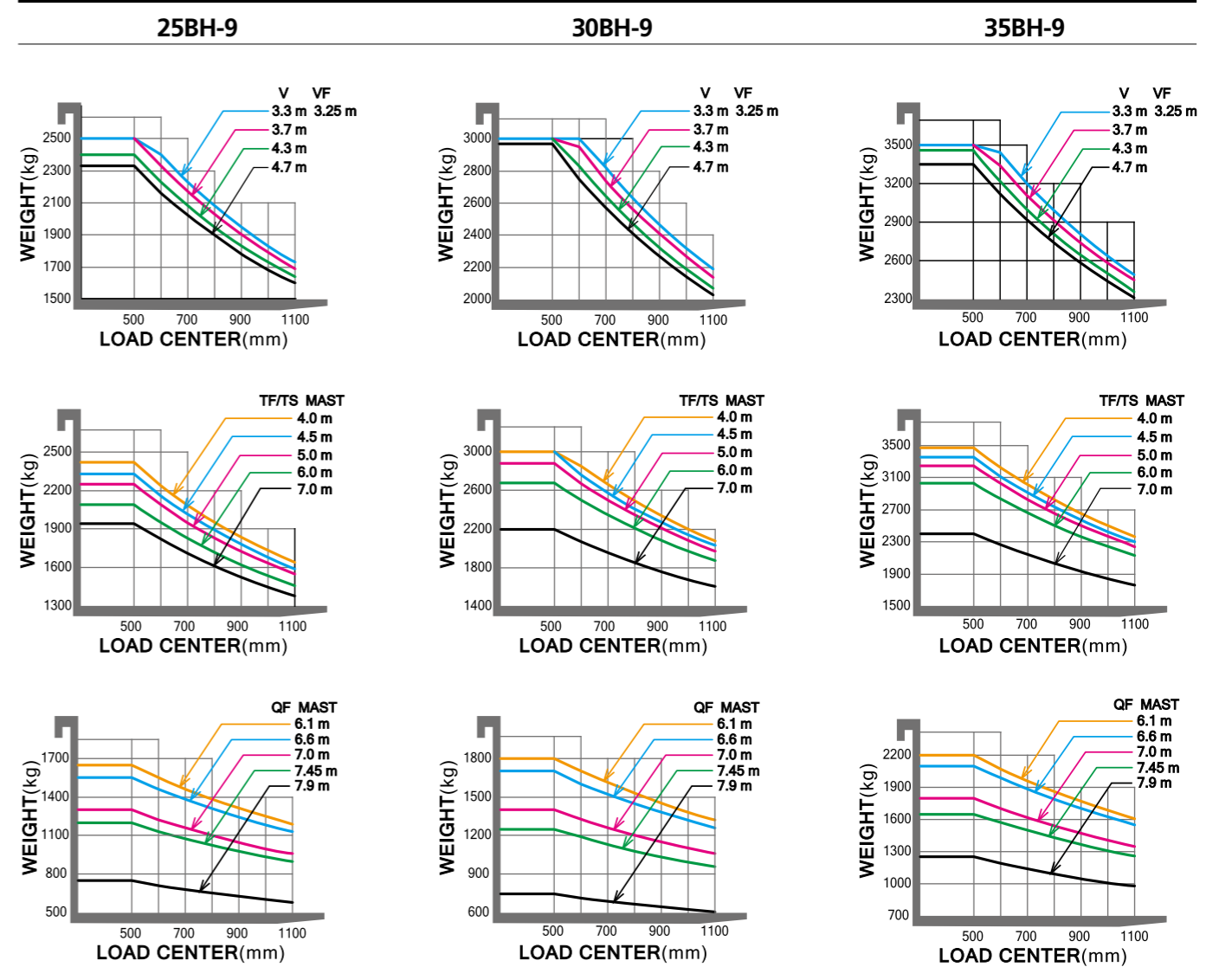
## Mast Specification (35BH-9)

Mast Type	Maximum Fork Height		Overall Height (Lowered)		Free Lift Height						Tilt Angle		Load capacity w/o side shift		Load capacity w/side shift		Truck Weight (Unloaded)		
					With Load Backrest		Without Load Backrest		Without Load Backrest (3/4-SPOOL)		Fwd	Bwd	24 in LC	500mm LC	24 in LC	500mm LC			
	in	mm	in	mm	in	mm	in	mm	in	mm	deg	deg	lb	kg	lb	kg	lb	kg	
2-Stage Limited free lift	V300	118.3	3,005	82.4	2,093	4.5	115	4.5	115	4.5	115	6	10	7,000	3,500	7,000	3,500	12,306	5,582
	*V330	130.1	3,305	88.3	2,243							6	10	7,000	3,500	7,000	3,500	12,357	5,605
	V350	138.0	3,505	92.2	2,343							6	10	7,000	3,500	7,000	3,500	12,398	5,624
	V370	145.9	3,705	98.1	2,493							6	10	7,000	3,500	7,000	3,500	12,451	5,648
	V400	157.7	4,005	104.1	2,643							6	10	7,000	3,500	7,000	3,430	12,503	5,671
	V450	177.4	4,505	115.9	2,943							6	6	7,000	3,450	7,000	3,300	12,685	5,754
2-Stage full free lift	VF295	117.2	2,976	82.4	2,093	35.9	913	54.2	1,377	54.2	1,377	6	6	7,000	3,500	7,000	3,500	12,385	5,618
	VF325	129.0	3,276	88.3	2,243	41.9	1,063	60.1	1,527	60.1	1,527	6	6	7,000	3,500	7,000	3,430	12,458	5,651
	VFVS345	136.9	3,476	92.2	2,343	45.8	1,163	64.1	1,627	64.1	1,627	6	6	7,000	3,500	7,000	3,350	12,531	5,684
3-Stage full free lift	TF430	169.5	4,305	82.4	2,093	35.9	913	54.2	1,377	54.2	1,377	6	6	7,000	3,450	7,000	3,300	12,856	5,832
	TF450	177.4	4,505	86.3	2,193	39.9	1,013	58.1	1,477	58.1	1,477	6	6	7,000	3,400	7,000	3,250	12,911	5,856
	TF470	185.2	4,705	88.3	2,243	41.9	1,063	60.1	1,527	60.1	1,527	6	6	7,000	3,350	6,760	3,200	12,948	5,873
	TF500	197.0	5,005	92.2	2,343	45.8	1,163	64.1	1,627	64.1	1,627	6	6	6,830	3,300	6,530	3,150	12,997	5,895
	TF550	216.7	5,505	100.1	2,543	53.7	1,363	71.9	1,827	71.9	1,827	6	6	6,610	3,150	6,310	3,000	13,094	5,940
	TF600	236.4	6,005	108.0	2,743	61.5	1,563	79.8	2,027	79.8	2,027	3	3	6,420	3,100	6,120	2,950	13,189	5,983
	TS450	177.4	4,505	86.3	2,193	39.9	1,013	58.1	1,477	58.1	1,477	6	6	7,000	3,400	7,000	3,250	12,911	5,856
	TS470	185.2	4,705	88.3	2,243	41.9	1,063	60.1	1,527	60.1	1,527	6	6	7,000	3,350	6,760	3,200	12,948	5,873
	TS500	197.0	5,005	92.2	2,343	45.8	1,163	64.1	1,627	64.1	1,627	6	6	6,830	3,300	6,530	3,150	12,997	5,895
	TS550	216.7	5,505	100.1	2,543	53.7	1,363	71.9	1,827	71.9	1,827	6	6	6,610	3,150	6,310	3,000	13,094	5,940
	4-Stage full free lift	TS600	236.4	6,005	108.0	2,743	61.5	1,563	79.8	2,027	79.8	2,027	6	6	6,420	3,100	6,120	2,950	13,189
TS650		256.1	6,505	115.9	2,943	69.4	1,763	85.6	2,173	80.0	2,033	3	3	5,400	2,600	5,100	2,450	13,302	6,034
TS700		275.8	7,005	123.7	3,143	77.3	1,963	93.4	2,373	87.9	2,233	3	3	4,590	2,200	4,290	2,050	13,388	6,073
QF610		240.7	6,115	85.0	2,158	40.0	1,017	57.4	1,459	57.4	1,459	3	3	5,180	2,500	4,880	2,350	14,565	6,607
QF790		311.6	7,915	108.6	2,758	63.7	1,617	80.1	2,035	74.1	1,882	3	3	3,040	1,450	2,740	1,300	15,087	6,843

※ TS-Mast : Wide Visible 3-Stage Full Free Lift Mast with 2 Free Lift Cylinders.

\* Standard

## Load Capacity

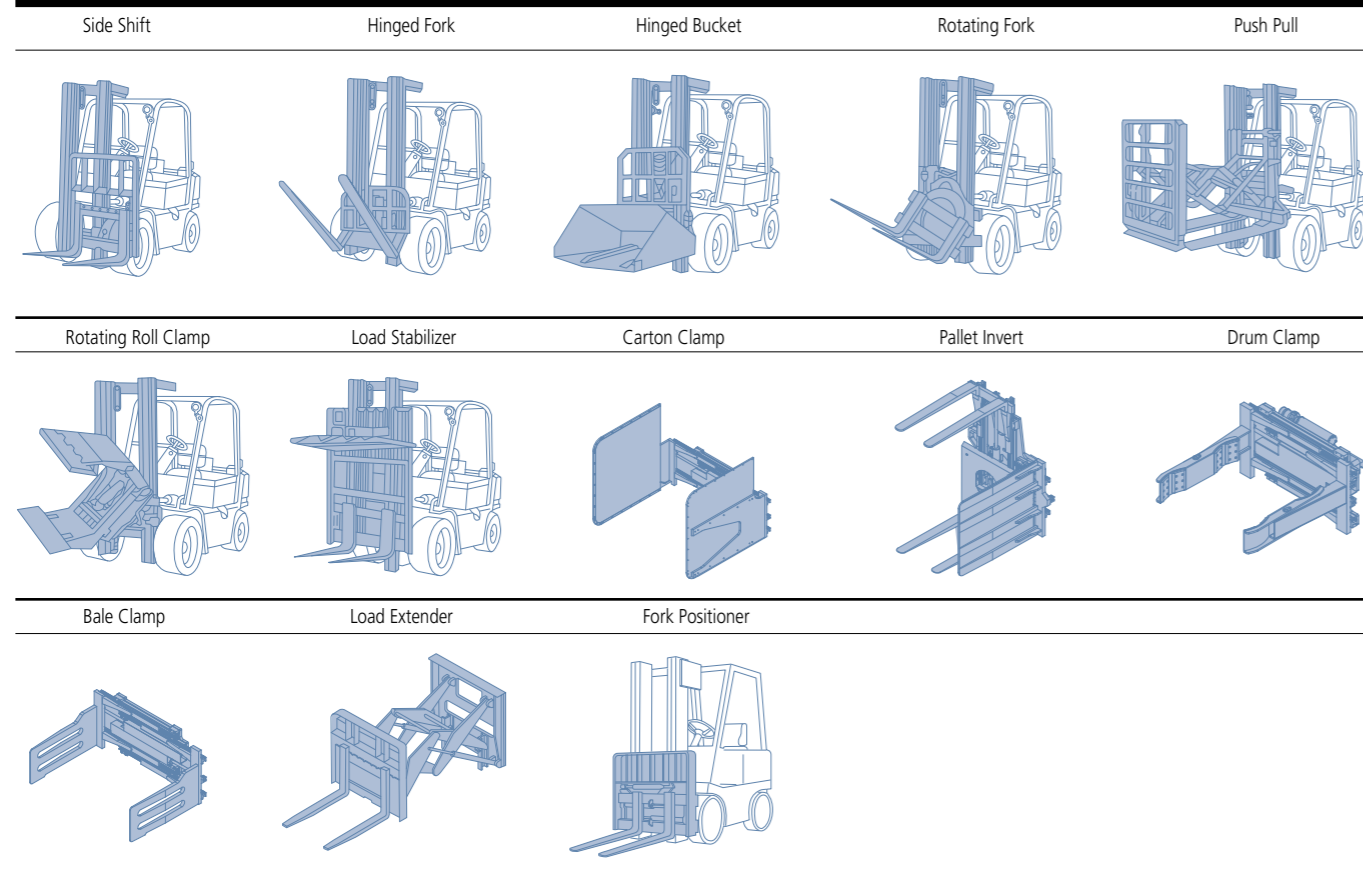




# New 9 Series

**25/30/35BH-9**

## Various Attachments

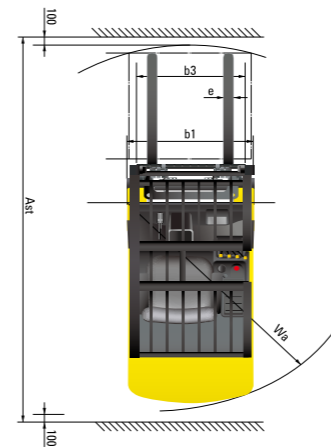
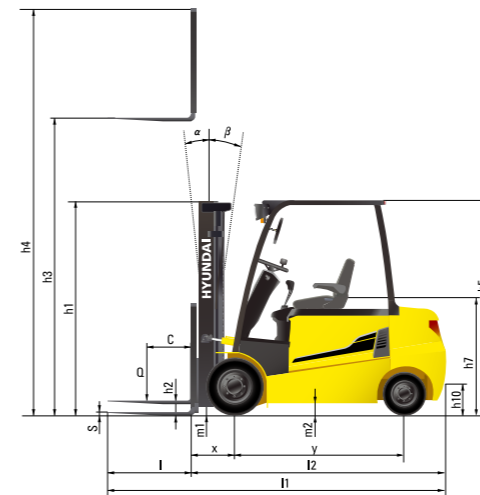


## Optional Items

- Fork(mm)  
25BH-9 : 900, 1000, 1050(STD), 1200, 1350, 1500, 1650, 1800  
30/35BH-9 : 900, 1050(STD), 1150, 1200, 1650, 1800, 1970, 2120, 2300, 2400
- Integral Sideshift, Fork positioner, Integral Fork positioner with shift
- Tire : Solid(STD)/ Pneumatic / Non-marking  
Wide tire[25/30BH-9 : Front tire (23x10-12)]
- Seat : Arm rest, Heat
- Finger Tip Control
- Cold Storage (for -30° cold working environments)
- M.C.V : 2-Spool (STD), 3-Spool, 4-Spool

- Auto Fork Leveling
- Beacon Lamp
- Weight Indicator
- Rear Work Lamp
- OPSS : Mast
- UL : ES, EE
- Cabin with heater
- Direction Switch on Lever
- Full LED Lamp

## Dimension



## Specification

### Identification

		HYUNDAI			
1. 1	Manufacturer	HYUNDAI			
1. 2	Manufacturer's type designation	25BH-9	30BH-9	35BH-9	
1. 3	Drive : electric(battery or mains), diesel, petrol, fuel gas, manual	electric	electric	electric	
1. 4	Type of operation : hand, pedestrian, standing, seated, order - picker	seated	seated	seated	
1. 5	Load capacity / rated load	Q kg	2,500	3,000	3,500
1. 6	Load center distance	c mm	500	500	500
1. 8	Load distance, center of drive axle to fork	x mm	458	458	470
1. 9	Wheelbase	y mm	1,575	1,719	1,719

### Weights

	kg	4,710	5,130	5,605	
2. 1	Service weight	kg	4,710	5,130	5,605
2. 2	Axle loading, loaded front / rear	kg	6,340 / 870	7,237 / 893	8,054 / 1,051
2. 3	Axle loading , unloaded front / rear	kg	2,320 / 2,390	2,565 / 2,565	2,579 / 3,026

### Wheels, Chassis

	SE, P	SE, P	SE, P		
3. 1	Tires : solid rubber(V), superelastic(SE), pneumatic(P), polyurethane(PE)	SE, P	SE, P	SE, P	
3. 2	Tires size, front( Φ x width)	23X9-10	23X9-10	23X10-12	
3. 3	Tires size, rear( Φ x width )	18X7-8	18X7-8	18X7-8	
3. 5	Wheels, number front rear(x = driven wheels)	2x/2	2x/2	2x/2	
3. 6	Track width, front	mm	993	993	1005
3. 7	Track width, rear	mm	980	980	980

### Basic Dimensions

	degrees	6/8	6/8	6/8	
4. 1	Mast / fork carriage tilt forward / backward	degrees	6/8	6/8	
4. 2	Lowered mast height	h1 mm	2,162	2,162	2,243
4. 3	Free lift height	h2 mm	115	115	115
4. 4	Lift height	h3 mm	3,305	3,305	3,305
4. 5	Extended mast height	h4 mm	4,485	4,485	4,485
4. 7	Overhead guard (cab) height	h5 mm	2,210	2,210	2,210
4. 8	Seat height / Standing height	h7 mm	1,118	1,118	1,118
4. 12	Coupling height	h10 mm	396	396	396
4. 19	Overall length	l1 mm	3,415	3,545	3,650
4. 20	Length to face of forks	l2 mm	2,365	2,495	2,600
4. 21	Overall width	b1 mm	1,195	1,195	1,245
4. 22	Fork dimensions	l / e / s mm	1050x100x45	1050x122x45	1050x122x45
4. 23	Fork carriage ISO 2328, class / type A, B	II/A	III/A	III/A	
4. 24	Fork - carriage width	b3 mm	1,102	1,102	1,102
4. 31	Ground clearance, loaded, under mast	m1 mm	117	117	128
4. 32	Ground clearance, centre of wheelbase	m2 mm	116	116	116
4. 33	Aisle width for pallets 1,000 x 1,200 crossways	Ast mm	3,516	3,664	3,676
4. 34	Aisle width for pallets 800 x 1,200 lengthways	Ast mm	3,694	3,851	3,863
4. 35	Turning radius	Wa mm	1,925	2,055	2,145
4. 36	Smallest pivot point distance	mm	-	-	-

### Performance Data

	km/h	18 / 19	18 / 19	18 / 19	
5. 1	Travel speed, loaded/ unloaded(80V)	km/h	18 / 19	18 / 19	
5. 2	Lift speed, loaded/ unloaded(80V)	mm/s	410 / 600	340 / 500	300 / 500
5. 3	Lowering speed, loaded/unloaded	mm/s	500 / 450	500 / 450	500 / 450
5. 6	Max. drawbar pull, loaded/ unloaded S2 5min	N	18,022 / 17,767	17,865 / 17,747	16,846 / 16,914
5. 8	Max. gradient performance, loaded/ unloaded S2 5min	%	26 / 24	22 / 24	19 / 22
5. 10	Service brake		Hydraulic	Hydraulic	Hydraulic

### E - Motor

	kW	8.0x2	8.0x2	8.0x2	
6. 1	Drive motor rating S2 60 min (80V)	kW	8.0x2	8.0x2	
6. 2	Lift motor rating at S3 20%(S2 10min)	kW	19.7	19.7	
6. 4	Battery voltage, nominal capacity K5	Ah	80 / 500	80 / 600	80 / 600
6. 5	Battery weight(min)	kg	1,470	1,780	1,780
	Battery compartment dimensions L / W / H	mm	714 / 1030 / 794	858 / 1030 / 794	

### Other Details

	AC	AC	AC	
8. 1	Type of drive control	AC	AC	AC